



“

This project is an example of how financial innovation can unlock investment in strategic sectors. Our collaboration with CFE allows us to support the modernization of Mexico's electric grid, with tangible benefits in job creation, economic development, and national sustainability.

”

Cheryl Edleson, Director of Infrastructure, Energy, and Mining at IFC for Europe, Latin America, and the Caribbean

We will begin shortly

We look forward to your participation in the Q&A session on **CFE Fibra E** through:



Question & answer section



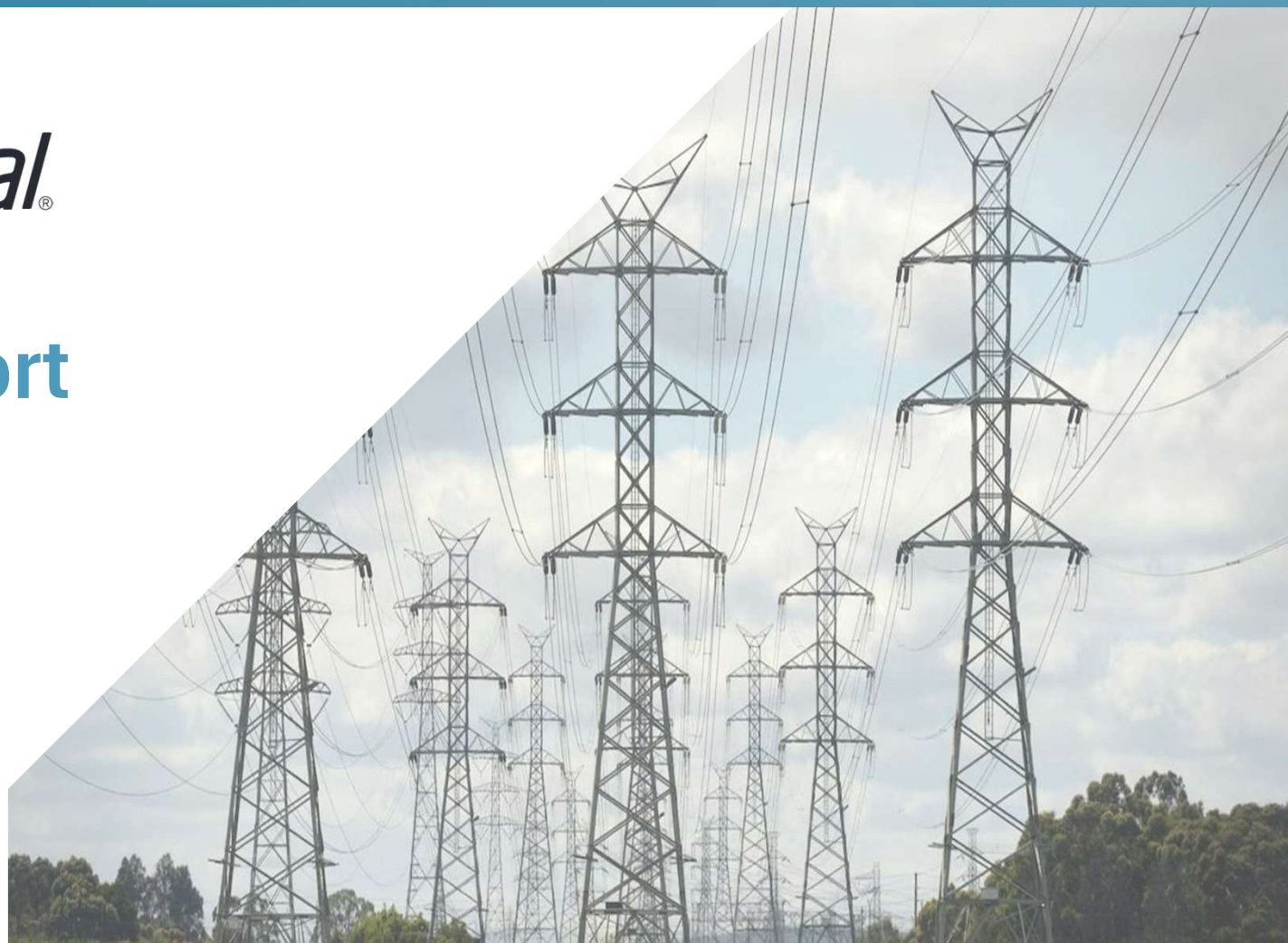
investor@cfecapital.com.mx



CFE/Capital[®]

Quarterly Report CFE Fibra E (FCFE18) 3Q25

October 2025



Disclaimer

IMPORTANT: You must read the following before continuing.

This presentation has been prepared by CFECapital, S. de R.L. of C.V. (“CFECapital” or the “Administrator”) and is provided to you for informational purposes only.

The Administrator, its partners, its representatives, or its members of staff make no warranty, express or implied, as to the accuracy or completeness of the information contained herein or in any other written or oral communication transmitted or made available to any recipient, and nothing should be considered a promise or representation of the performance of any investment. The Administrator, its partners, its representatives, or its staff expressly waive all liability based, in whole or in part, on such information, errors, or omissions thereof. Neither this presentation nor the comments issued by the Administrator, its partners, its representatives, or its staff constitute an offer to sell, a solicitation to purchase securities. They may not be used to support an investment decision or to be relied upon in the evaluation of its merits.

The information in this presentation is current only as of the date hereof; therefore, at any time after this date, such information may have changed concerning the business, financial condition, results of operation, and prospects of CFE FIBRA E. The delivery of this presentation shall not, under any circumstances, create any implication that there have been no changes in the affairs of the Administrator after the date hereof.

This presentation and oral comments contain forward-looking statements. All statements of historical fact included in the presentation are forward-looking statements. These show the current expectations and projections of CFE FIBRA E, concerning its financial condition, results of operations, plans, objectives, future performance, business, present and future commercial strategies of CFE FIBRA E, and the environment in which they will operate in the future. Such may include, without limitation, any statement preceded by, followed by or including words such as objective, believe, expect, aim, intend, anticipate, assume, budget, continue, estimate, future, outlook, plan, potential, predict, will, should, and other words or terms of similar or negative meaning. Forward-looking statements involve known and unknown risks, uncertainties, and other important factors beyond the control of CFE FIBRA E that could cause the actual results, performance, or achievements of CFE FIBRA E to be materially different from those anticipated by such statements in the future. In this sense, all forward-looking statements should not be considered a guarantee that the expected results and effects will be obtained. These statements speak only as of the date hereof, and the Administrator, its partners, its representatives, or its personnel undertake no obligation to update the statements to reflect subsequent events or circumstances.

The presentation is confidential and may not be reproduced, redistributed, published or transmitted to any other person, directly or indirectly, in whole or in part, for any purpose. This document cannot be removed from the facilities. If this document has been received in error, it must be returned immediately to the Administrator.

Dedicated CFECapital team fully committed to FCFE



Iván Cajeme Villarreal Camero
Chief Executive Officer



José Luis Martínez González
Chief Financial Officer



Gilberto Antonio Vera Cantoral
Chief Legal Officer



Brenda Janeth Pequeño Vargas
*Sustainability and Corporate
Relations Manager*



María Flores Garza
Administration Manager

Executive Summary: Strong performance with a unique business model and growth potential

1



Macro Fundamentals

- Energy growth surpasses GDP, fueling Mexico's future
- Investment Plan as a priority of the administration to boost Power Sector even further

2



Power Transmission Sector

- Assets are constitutionally defined as strategic and will enable Mexico's Power Strategy
- Business has country-and-sector-wide diversification with solid growth both in nominal and real terms

3



CFE Fibra E Performance

- Inaugural bond delivered strong performance, boosting transmission exposure and generating sustainable value for CFE Fibra E investors.
- 2nd largest distribution in 3Q25
- Dividend performance well above Mexican REITs and Energy REITs

4



Sustainability

- Global investors demand transparency, accountability, and long-term value
- CFE Fibra E embeds ESG principles into its financial strategy, strengthening governance and investor confidence

Commercial, population, and economic growth are driving the power sector

Macro fundamentals

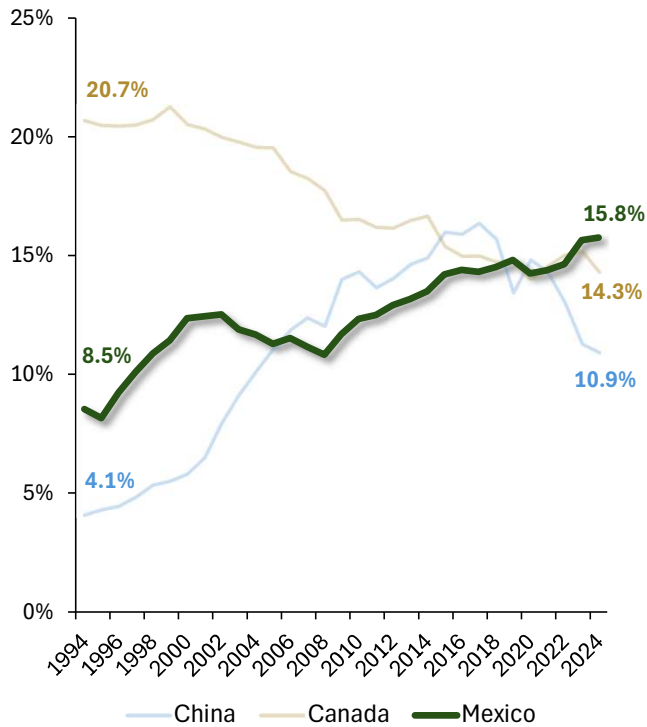
Power Transmission Sector

CFE Fibra E Performance

Sustainability

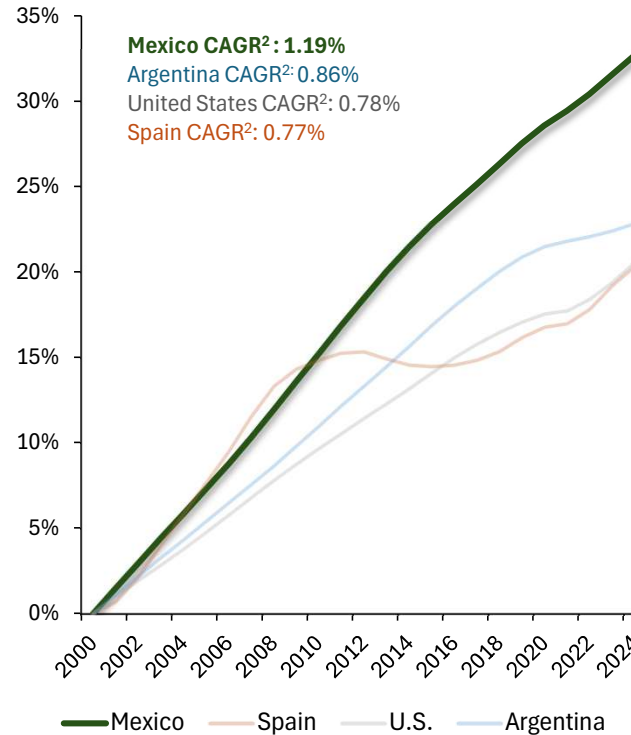
Share in US Trade

1994 – 2024 | %



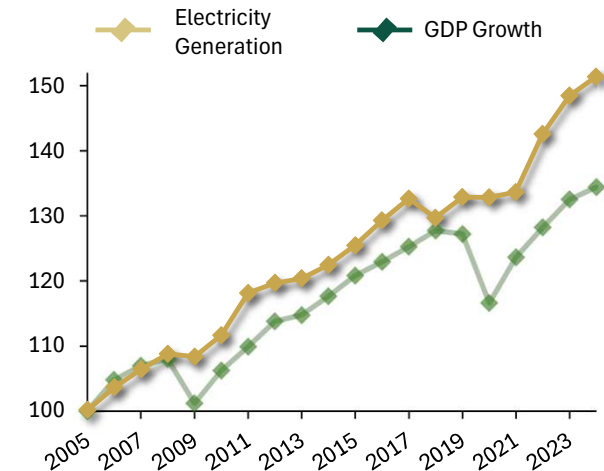
Population Increase¹

2000 – 2024 | %



Electricity generation vs real GDP

2005 – 2024 | (2005=100)



Electricity generation has outpaced GDP growth, averaging **1.27x** over the last **20 years**

Electricity powers growth and productivity



Note:¹ Total population.

Note:² Compounded Annual Growth Rate.

Source: United States Census Bureau, International Labour Organization (ILO), Banxico.

Stable country risk strengthens Mexico's investment appeal

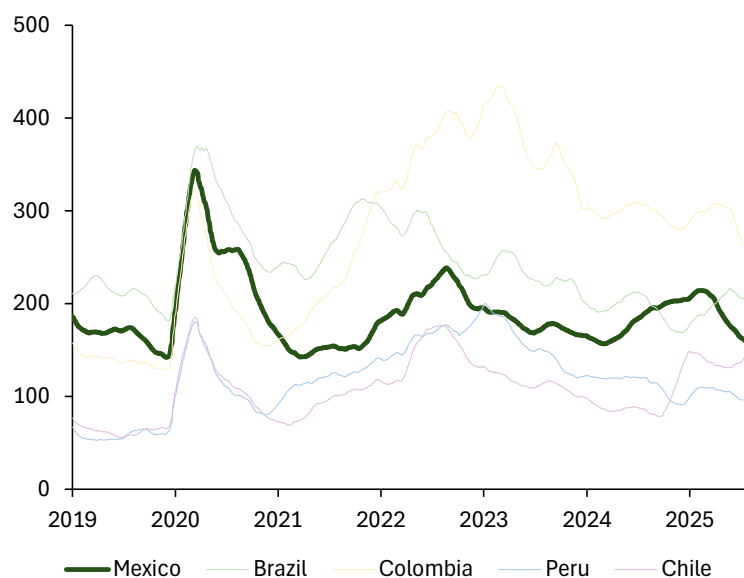
Macro fundamentals

Power Transmission Sector

CFE Fibra E Performance

Sustainability

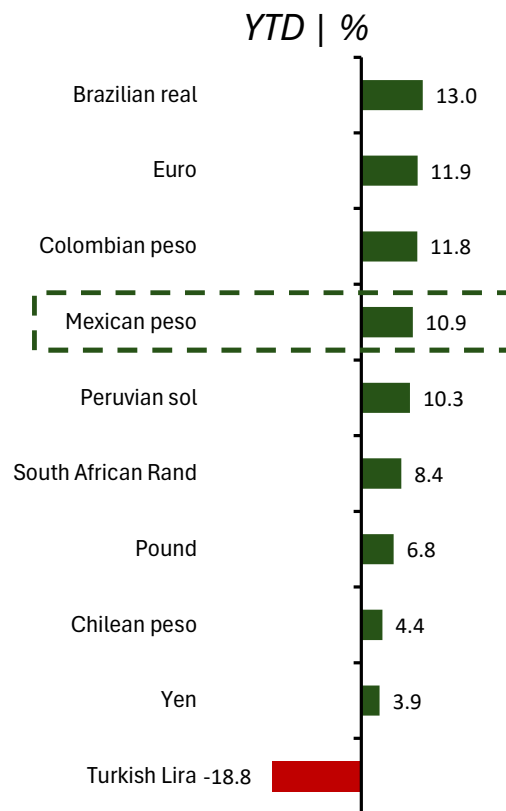
10y Bond Rate Spreads vs. UST
2019 – 2025 | bps (3-mo moving average)



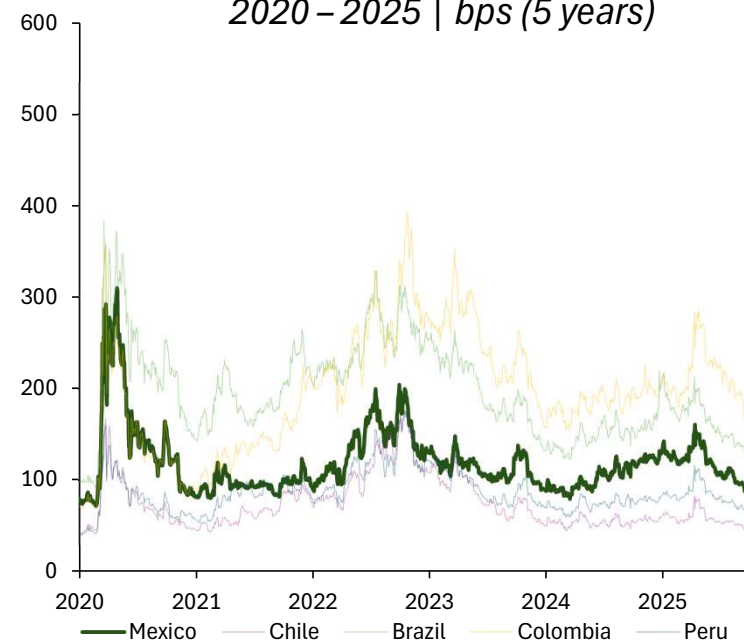
Evolution of the Treasury spread since its peak during Covid

Mexico	Brazil	Colombia	Peru	Chile
-186	-166	-62	-85	-41

Currency Appreciation vs. USD



Credit Default Swap
2020 – 2025 | bps (5 years)



Evolution of the CDS since its peak during Covid

Brazil	Mexico	Colombia	Chile	Perú
-246	-218	-164	-117	-90

A comprehensive investment plan to foster electric sector expansion, included transmission

Macro fundamentals

Power Transmission Sector

CFE Fibra E Performance

Sustainability

CFE Fibra E is a key player in the energy national strategy, channeling funds to support the Expansion Plan

CFE Investment Plan

Transmission Projects

US\$7.5bn

modernization and expansion of network, FCFE is a potential source of funding for these projects

Generation Projects

US\$22.4bn

29,074 MW additional capacity

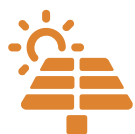
Distribution Projects

US\$3.6bn

substations, electrical transformers and feeders

- On October 20, the Ministry of Energy launched a fast-track process for generation and interconnection permits of strategic power plants.¹
- Growth in private generation investment drives higher transmission demand, enhancing the long-term value and strategic relevance of CFE Fibra E's underlying transmission assets.

34 projects have been prioritized for private investment.



Solar power:
11 projects
3,790 MW



Wind power:
23 projects
2,180 MW



Total: 5,970 MW



US\$7.1 bn

Investment is already driving improved performance, higher volumes, and increased revenues

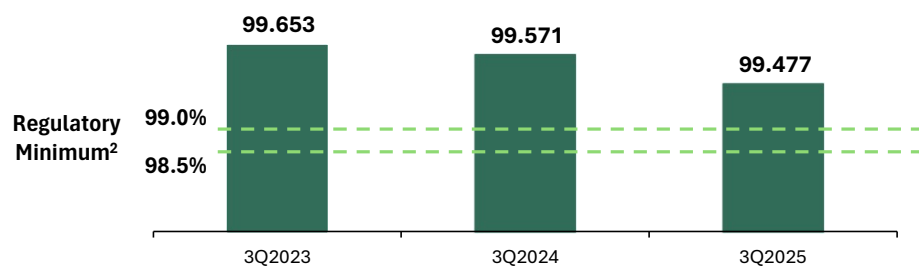
Macro fundamentals

Power Transmission Sector

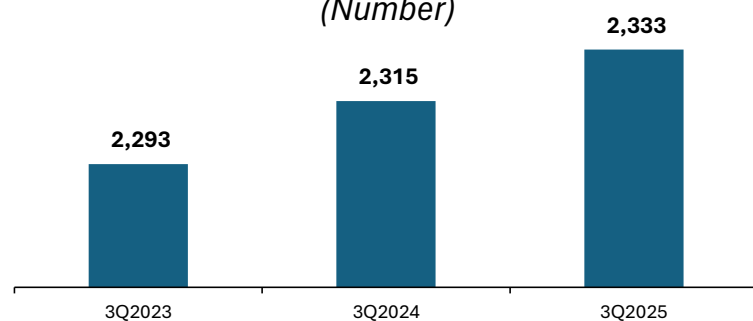
CFE Fibras Performance

Sustainability

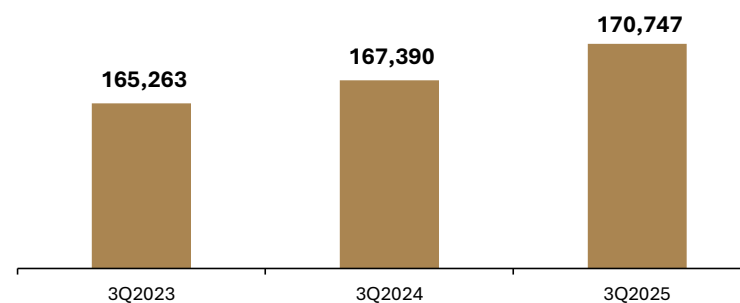
Average Service Availability Index (ASAI)¹ (Percentage)



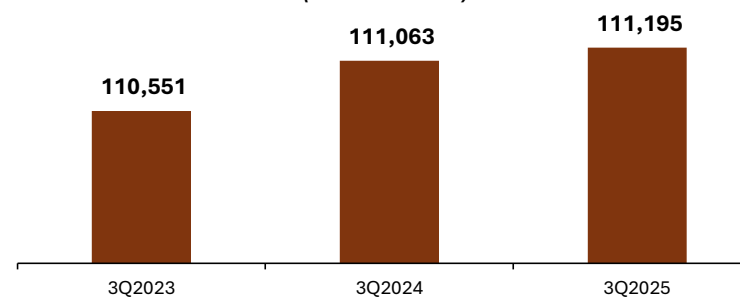
Substations (Number)



Transformation Capacity³ (MVA)



Transmission Lines (Kilometers)



Electricity transmission volumes have grown steadily at 1.8% on average since 2019

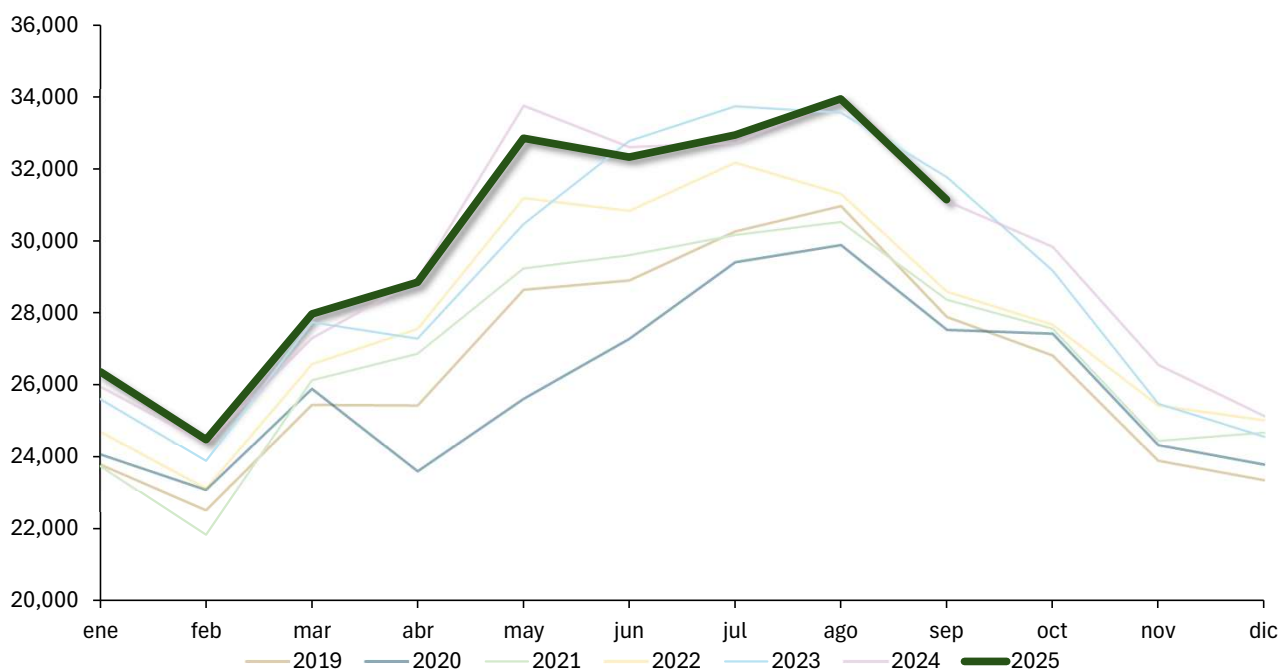
Macro fundamentals

Power Transmission Sector

CFE Fibra E Performance

Sustainability

Volume of electricity transmitted (MWh¹ | 2019 – 2025)



Note: ¹ Megawatt-hour.

Source: CFE, September 30th, 2025.

CAGR¹
+ 1.8%
Electricity Volume
YTD 2019 – 2025

Monthly Average Energy Volume Jan-Sept (MWh¹ | YTD 2019 – 2025)

Date	Average Volume
YTD 2019	27,094
YTD 2020	26,262
YTD 2021	27,388
YTD 2022	28,448
YTD 2023	29,649
YTD 2024	30,080
YTD 2025	30,095

Note: Compound Annual Growth Rate of 1.8%. Figures correspond to the period of January to September of every year.

Sustained tariff increases have driven robust revenue performance

Macro fundamentals

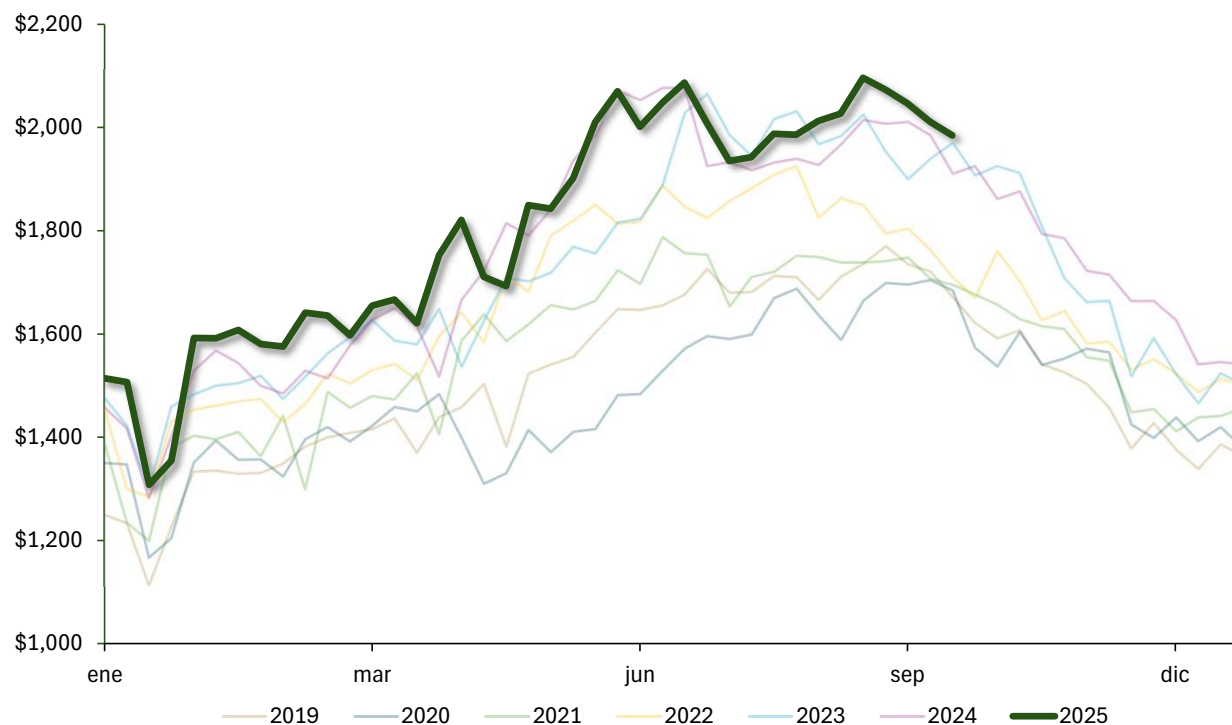
Power Transmission Sector

CFE Fibra E Performance

Sustainability

Collection Rights from Promoted Trust

(Weekly | 2019 – 2025 | Million pesos)



Note: Collection rights include VAT. Figures are rounded.

Source: CFE with information as of September 30th, 2025.

CAGR¹

+ 3.0%

Average Collection Rights

YTD 2019 – 2025

Monthly Average Collection Rights

(YTD 2019 – 2025 | Million pesos)

Date	Average Collection Rights
YTD 2019	6,563
YTD 2020	6,554
YTD 2021	6,824
YTD 2022	7,210
YTD 2023	7,490
YTD 2024	7,635
YTD 2025	7,817

The unique transmission business model and regulatory framework support CFE's long-term stability

Macro fundamentals

Power Transmission Sector

CFE Fibras Performance

Sustainability

Unique Business Model

Art.
27, 28



Strategic sector by
Constitution



Critical national Infrastructure



100% transmission assets
under regulated tariffs



No competition or
substitution risk



Country and economy-wide
diversification



No commercial risk

Mature Regulatory Framework



CFE: 88 years of operational
excellence



Transmission: 65 years
managed exclusively by the
State



Power Regulator: 30 years of
independent decision-making



Tariff framework: over 10 years
consistently being applied by
the independent regulator

Transparent Tariff Model



Tariffs based on economic
and technical criteria



Law ensures cost recovery
and regulated returns



Annual updates and
interim reviews allowed



Balanced risk sharing
between generators and
consumers

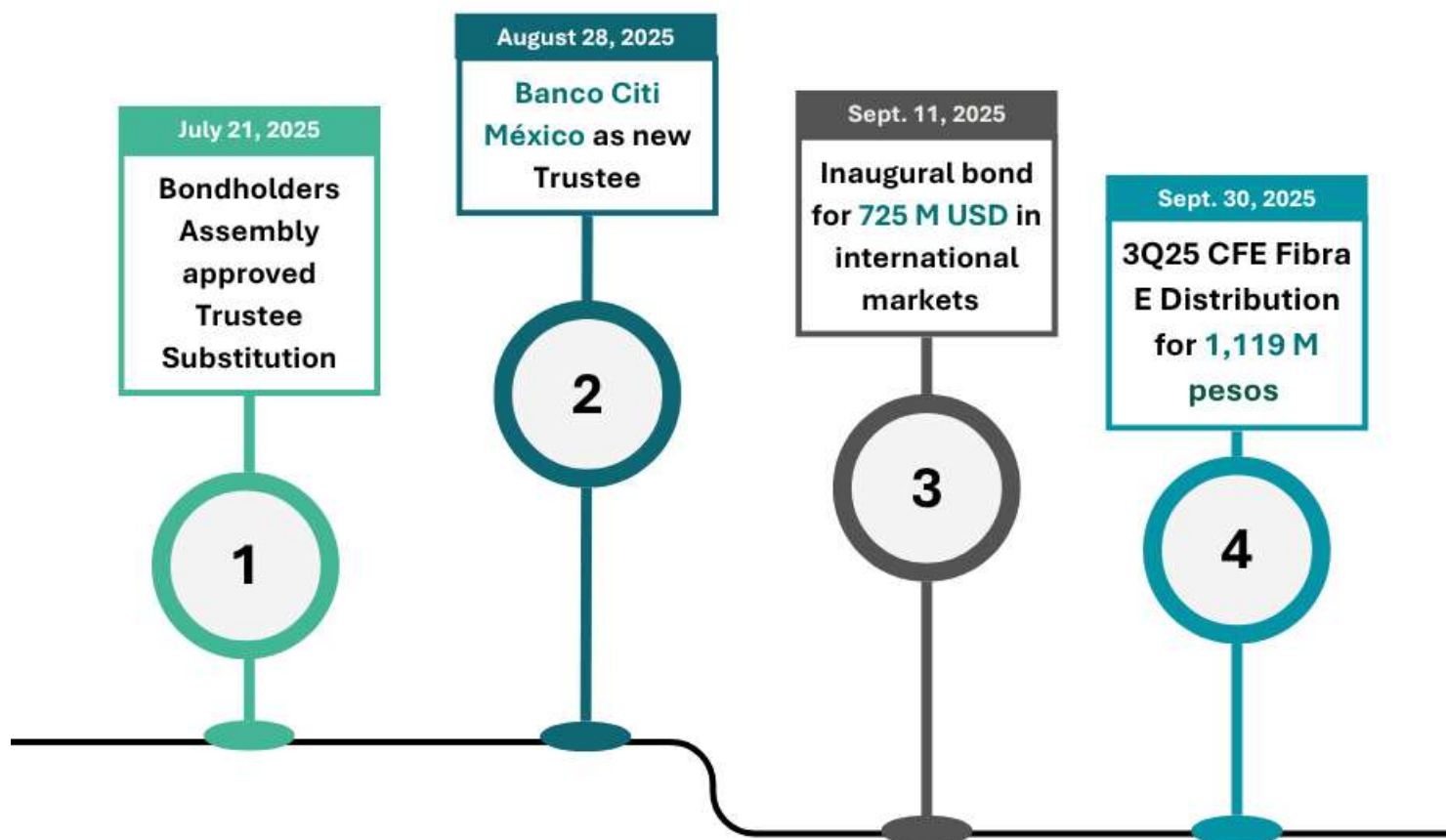
Relevant events FCFE

Macro fundamentals

Power Transmission Sector

CFE Fibras Performance

Sustainability



FCFE's inaugural bond issuance with outstanding results

Macro fundamentals

Power Transmission Sector

CFE Fibra E Performance

Sustainability



On September 11, 2025, CFE Fibra E successfully completed its inaugural bond issuance for US\$725 million at 5.875% over 15-years



Net proceeds were earmarked to increase CFE Fibra E's interest in the Promoted Trust by 2.731397 pp, bringing total ownership to 9.5075%, effective as of October 1, 2025

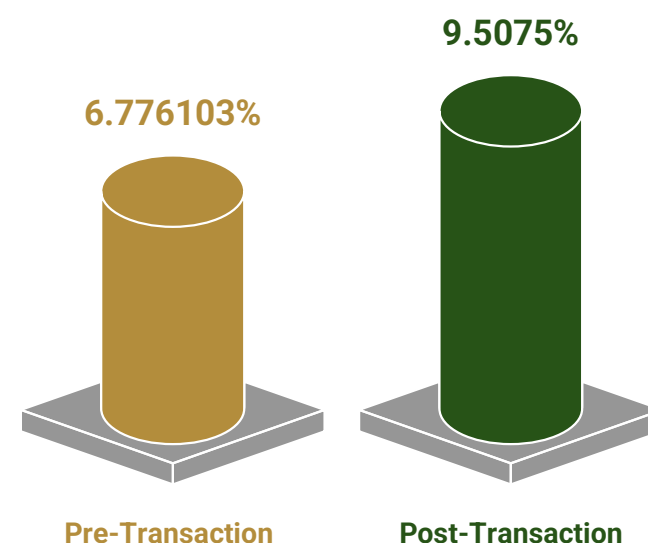


The proceeds will be allocated by CFE to finance strategic projects within the NTN under CFE's 2025-2030 Expansion Plan



The acquisition of additional Beneficiary Rights enables the vehicle to obtain incremental cash flows immediately, with no exposure to execution risk

Beneficiary Rights




A comprehensive hedging strategy effectively mitigating FX risk while minimizing cost

Macro fundamentals

Power Transmission Sector

CFE Fibra E Performance

Sustainability

 Through a dual hedging structure covering both principal and interest, CFE Fibra E strengthens cash flow stability, reduces financing costs, and safeguards long-term value against market volatility



Designated under hedge accounting, the derivatives offset market-related valuation effects, **preventing impacts** on taxable income



The derivative structure provides **full coverage** of exchange-rate exposure **on** principal **amortizations**



For interest payments, the structure incorporates broad forward FX bands based on historical performance, enhancing **cost efficiency** under diverse market conditions

An accretive transaction generating growing returns for investors

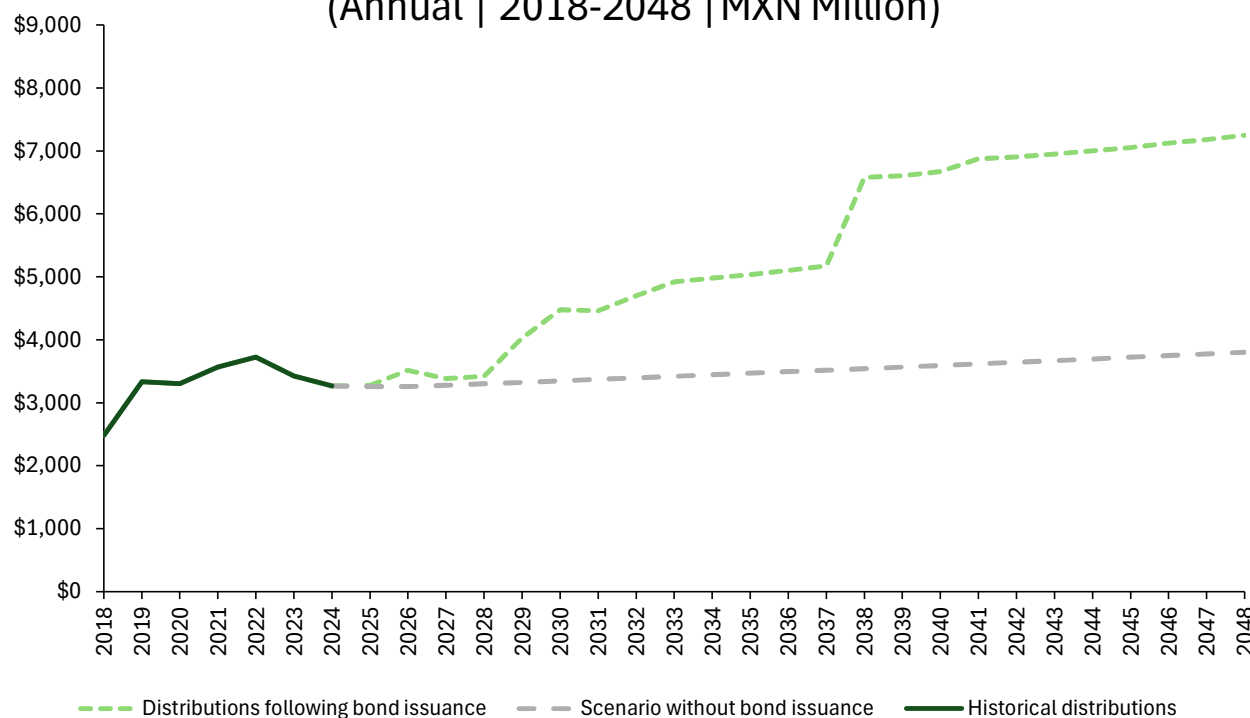
Macro fundamentals

Power Transmission Sector

CFE Fibra E Performance

Sustainability

Distributions to Shareholders¹ (Annual | 2018-2048 | MXN Million)



+10%

Attractive IRR on incremental shareholder distributions after debt service and hedge

On top of an already double-digit dividend yield.

+20%

Increase in the NPV of estimated future shareholder distributions²

From 2030 onwards, annual distributions to holders are projected to exceed historical trends by more than **MXN 1 billion**



Note: ¹ Estimated figures. For the scenario without bond issuance, it is assumed a dividend growth of 1% consistent with divided CAGR between 2019-2023

Note: ² Assuming an unlevered cost of equity of 12.6% and a levered cost of equity of 14.0%. Based on a CAPM Methodology

Proceeds used to increase FCFE's stake and fund CFE's CAPEX program

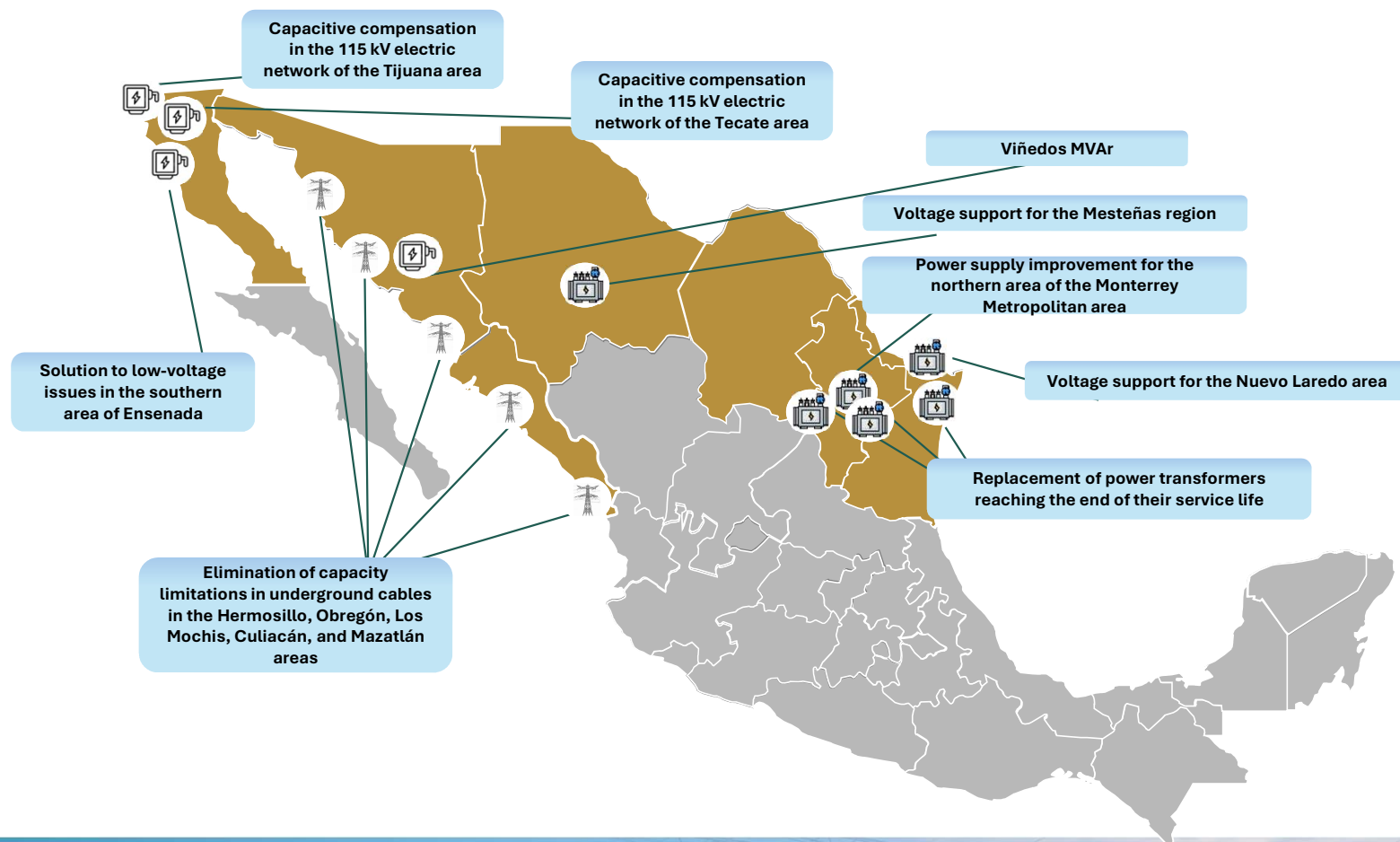
Macro fundamentals

Power Transmission Sector

CFE Fibra E Performance

Sustainability

CFE is already utilizing proceeds to advance **nine priority projects** aimed at expanding and modernizing the NTN, strengthening grid reliability and ensuring uninterrupted electricity supply for residential, commercial, and industrial users.



Strong 3Q 2025 performance

Macro fundamentals

Power Transmission Sector

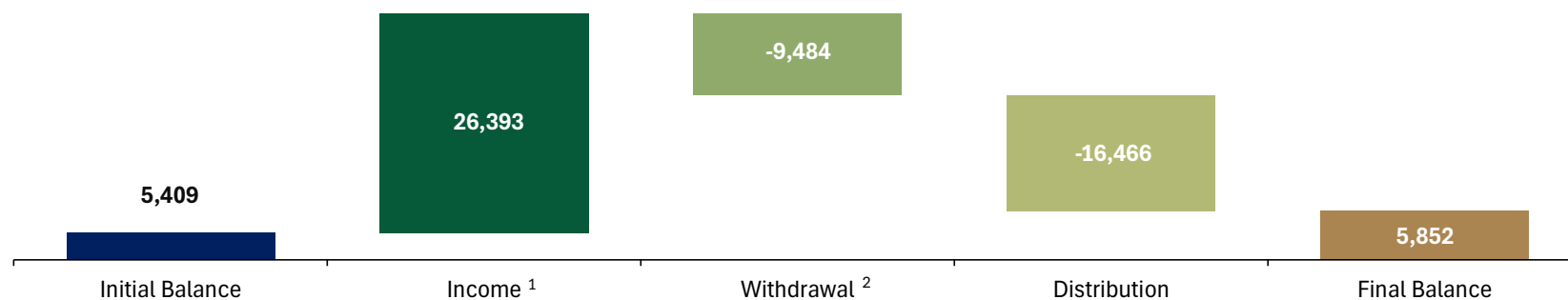
CFE Fibra E Performance

Sustainability

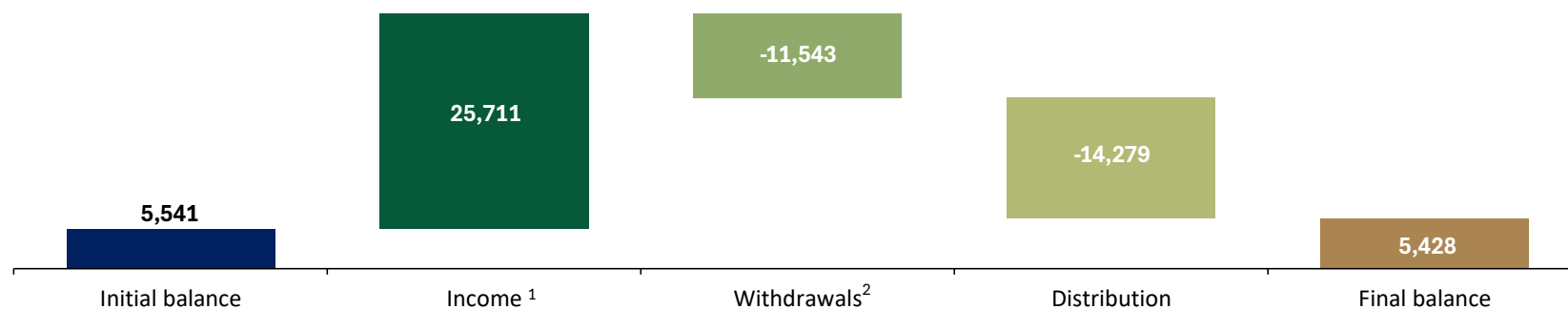
Promoted Trust F/80758 Account Movements Summary

Million pesos

3Q 2025



3Q 2024



The Promoted Trust ensures transparency, accountability, and effective budgetary oversight

Macro fundamentals

Power Transmission Sector

CFE Fibra E Performance

Sustainability

Independent members of
CFE Fibra E



Empowered to approve the Budget, with veto rights



Oversee proper budget execution

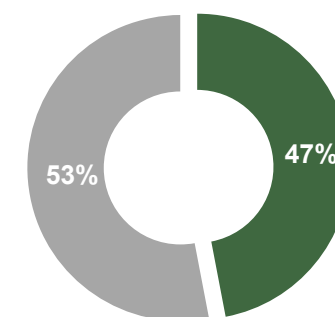


Safeguard the interest of bondholders

Approved Budget vs Executed budget January - September 2025

Million pesos

Category	2025 Budget	YTD	%
Intercompany expenses ¹	7,000	1,060	15%
Operation & maintenance	12,131	7,987	66%
Expenses for obligations	5,733	4,068	71%
Major maintenance and modernization	17,291	6,837	40%
Trust-related costs	16	12	75%
Financing costs	-	-	0%
Total	42,171	19,964	47%



■ Executed ■ Available

3Q Distribution of 1,119 million pesos

Macro fundamentals

Power Transmission Sector

CFE Fibra E Performance

Sustainability

Promoted Trust's Fiscal Results 3Q 2025¹

Million pesos

CENACE Revenue	22,599
(+) Interests	183
(-) Reimbursements to Transmission	-6,301
(-) Amortization to the intangible asset	-5,649
(-) Trusts expenses	-3
Distributable taxable income 3Q 2025	10,829
(+) Capital reimbursements	5,637
Total distributable of the Promoted Trust 3Q 2025	16,466

In 3Q 2025, the Promoted Trust distribution was classified **66%** to Taxable Income and **34%** to Capital Reimbursement

CFE Fibra E Distribution 3Q 2025¹

Million pesos

Distribution to the Promoted Trust	16,466
Distribution to CFE FIBRA E 6.776103%	1,116
(-) Replenishment of the Expense Reserve Fund ²	-1.8
(+) Interests generated	5
Use of distribution ratio	0
Distributable amount to equity holders	1,119

Payment waterfall aligns incentives and maximizes value for holders

Macro fundamentals

Power Transmission Sector

CFE Fibra E Performance

Sustainability

CFE Fibra E's waterfall payments

3Q 2025 | Millon pesos

\$1,119 Distributable Amount

\$491
MQD Series "A"
\$0.5750 per CBFE

\$0
Pending MQD
\$0 per CBFE

\$164
MQD Series "B"
\$0.5750 per CBFE

\$129
Pending MQD ^(1Q25)
\$0.4547 per CBFE

Prorrata

\$252
Series "A"
\$0.2949 per CBFE

\$84
Series "B"
\$0.2949 per CBFE

Total Distribution

\$742

Series "A"

\$0.8699 per CBFE

\$377

Series "B"

\$1.3246 per CBFE

Composition of the 3Q 2025 Distribution for CBFE¹

Macro fundamentals

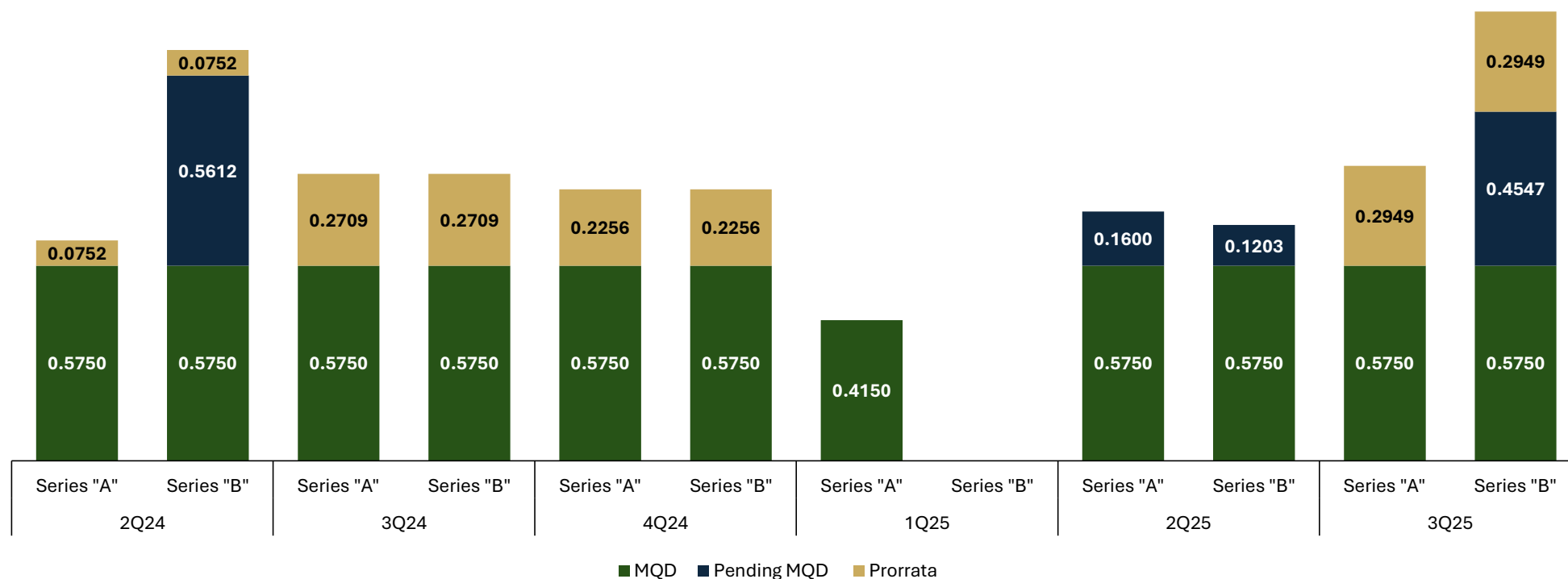
Power Transmission Sector

CFE Fibra E Performance

Sustainability

Distributable Income composition of Series “A” and “B” Certificates of CFE FIBRA E

3Q 2024 – 3Q 2025 | MXN for each CBFE¹



Note: MQD: Minimum Quarterly Distribution. CFE Capital issues the distribution instruction to the Trustee, who then deposits the funds with the Instituto para el Depósito de Valores (INDEVAL), the central securities depository of the Mexican Stock Exchange. Figures are rounded.
Source: Technical Committees of the Issuing Trust (2024–2025).

Fiscal Composition of 3Q 2025 Distribution by CBFE¹

Macro fundamentals

Power Transmission Sector

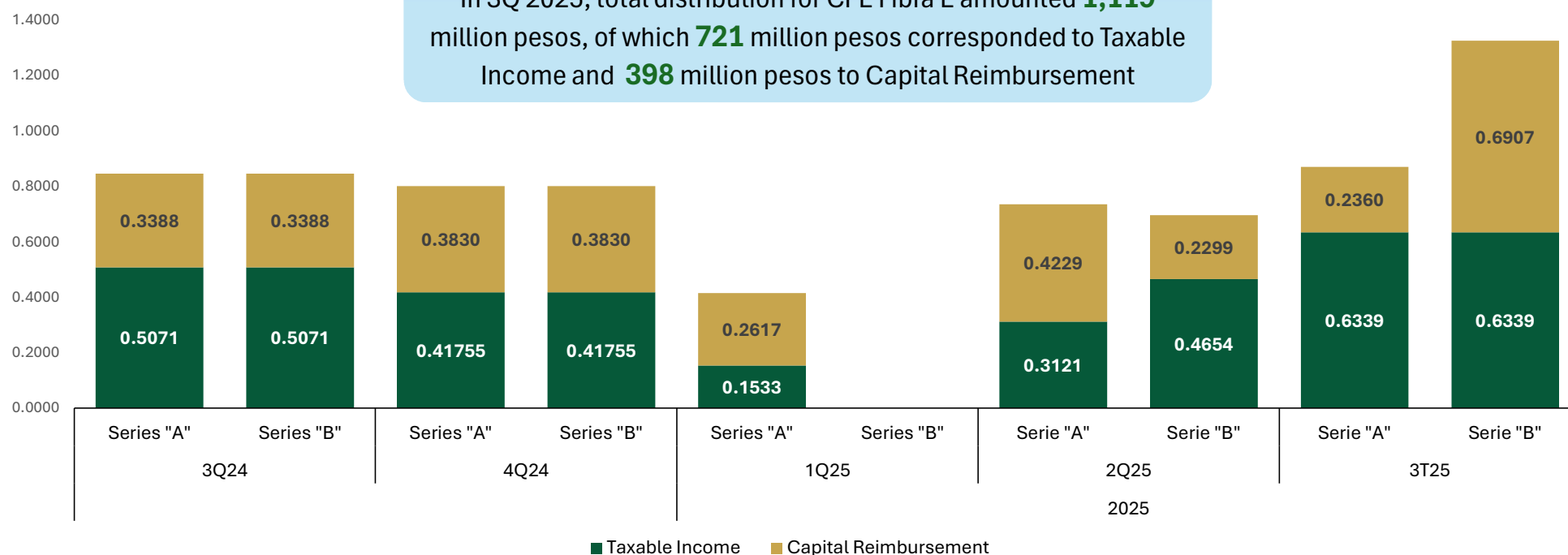
CFE Fibra E Performance

Sustainability

Fiscal composition from distributions of Series “A” and “B” Certificates of CFE FIBRA E

3Q 2024 – 3Q 2025 | MXN per CBFE¹

In 3Q 2025, total distribution for CFE Fibra E amounted **1,119** million pesos, of which **721** million pesos corresponded to Taxable Income and **398** million pesos to Capital Reimbursement



Note: ¹Fiduciary Investment Trust Certificates in Energy and Infrastructure or *Certificado Bursátil Fiduciario de Inversión en Energía e Infraestructura*. The distributions are approved by the Technical Committee and are determined based on the tax requirements under the Mexican Income Tax Law (Ley del Impuesto sobre la Renta). The custodian acts as the withholding agent.
Source: Technical Committee of the Issuing Trust (2024 - 2025).

The price of CFE Fibra E has remained stable with a high potential for appreciation

Macro fundamentals

Power Transmission Sector

CFE Fibra E Performance

Sustainability

Price and volume of CFE FIBRA E

January 1st, 2025 to September 30th, 2025 | MXN per CBFES²



Year	Analysts' year-end target price
2024	30.94
2023	31.21
2022	29.93
2021	29.38
2020	28.91
2019	27.67

Maximum Price:
17/07/25 \$23.30

Minimum Price:
29/09/25 \$22.31

3Q 2025²
Average Daily
Volume: 167,867



Notes: ¹ Third Calendar Quarter runs from July 1st to September 30th, 2025. Fiduciary Investment Trust Certificates in Energy and Infrastructure or *Certificado Bursátil Fiduciario de Inversión en Energía e Infraestructura*. Institutions providing coverage are: BTG Pactual, Barclays, Morgan Stanley, BBVA, Santander, Banorte, and Monex.
Source: CFE Capital elaboration using Bloomberg data as of September 30, 2025.

CFE Fibra E leads dividend yields among Mexican REITs during 3Q-2025

Macro fundamentals

Power Transmission Sector

CFE Fibra E Performance

Sustainability

Dividend Yield CFE FIBRA E^{1/} vs. Mexican REITs^{2/}

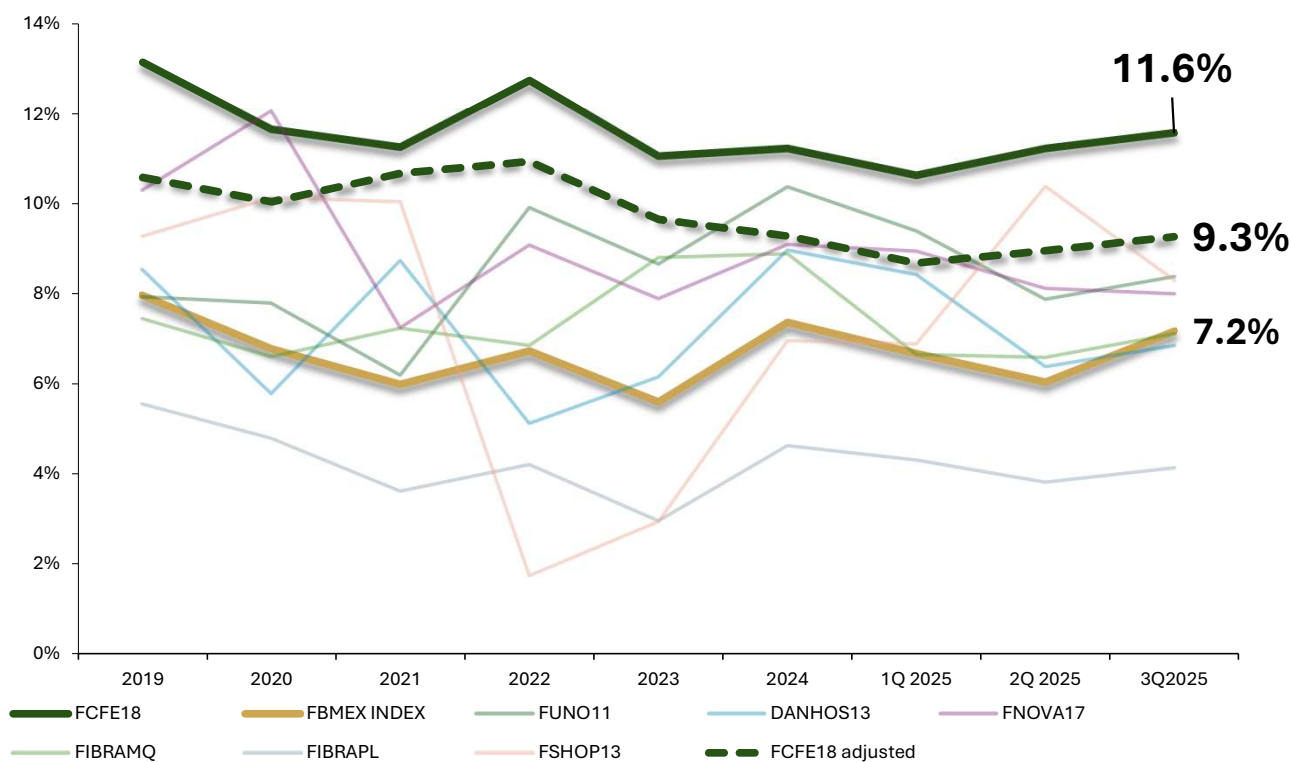
3Q 2025 | %

Instrument	3Q 2025 (%)
CFE FIBRA E	11.6
CFE FIBRA E adjusted ^{3/}	9.3
FIBRA UNO	8.4
FIBRA SHOP	8.3
FIBRA NOVA	8.0
FIBRA MACQUARIE	7.1
FIBRA DANHOS	6.9
FIBRA PROLOGIS	4.1
FBMEX INDEX	7.2

CFE Fibra E's dividend yield remains **210 bps** above the FIBRAS index, even when adjusted to analysts' target price

Dividend Yield of CFE FIBRA E^{1/} vs. Mexican REITs^{2/}

2019 – 3Q 2025 | %



Note: ^{1/} Calculated by adding the last four distributions and dividing by the weighted average price over the corresponding period. ^{2/} For the other instruments, as well as for the Fibras index, the 12-month dividend yield is taken as of the last day of the period, and it does **not** include extraordinary distributions ^{3/} Dividend Yield calculated using the average target price estimated by analysts (\$30.43).

Source: CFE Capital using Bloomberg data as of September 30, 2025.

Strengthening our ESG^{1/} framework through IFC alignment

Macro fundamentals

Power Transmission Sector

CFE Fibra E Performance

Sustainability

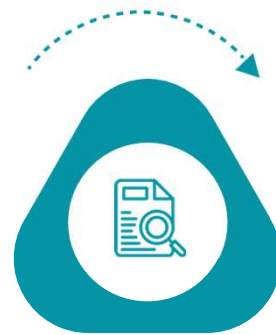


Strong Fundamentals

Macroeconomic and regulatory fundamentals: Attractive market for infrastructure investment

IFC Anchor Investor

Recognition of CFE and FCFE's alignment with international sustainability standards



Performance standards

CFE and FCFE apply the IFC Performance Standards, reinforcing their commitment to responsible investment and continuous improvement

The success of CFE Fibra E's USD 725 million inaugural bond reflects investor confidence in Mexico and the vehicle's governance

Risks & Impacts
Management of social and environmental risks and impacts



Mechanisms
Mechanisms for addressing potential impacts

Conditions
Labor and Working Conditions



HSS
Community health, safety, and security

Sustainable Performance
Resource Efficiency & Pollution Prevention



Sustainability: CFE Fibra E - ESG¹ international high standards

Macro fundamentals

Power Transmission Sector

CFE Fibra E Performance

Sustainability

Sustainability strategy structured around four pillars:

1. Strategy & Benchmarking
2. Governance & Accountability
3. Data & Impact Measurement
4. Reporting





CFE/Capital®



Questions & Answers



investor@cfecapital.com.mx



www.cfecapital.com.mx

Follow us:



[CFECapital](#)



[FCFE](#)

